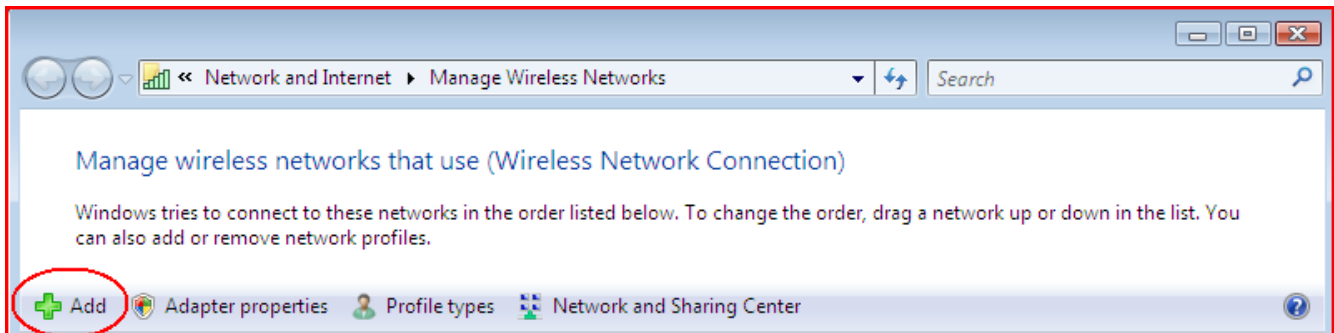
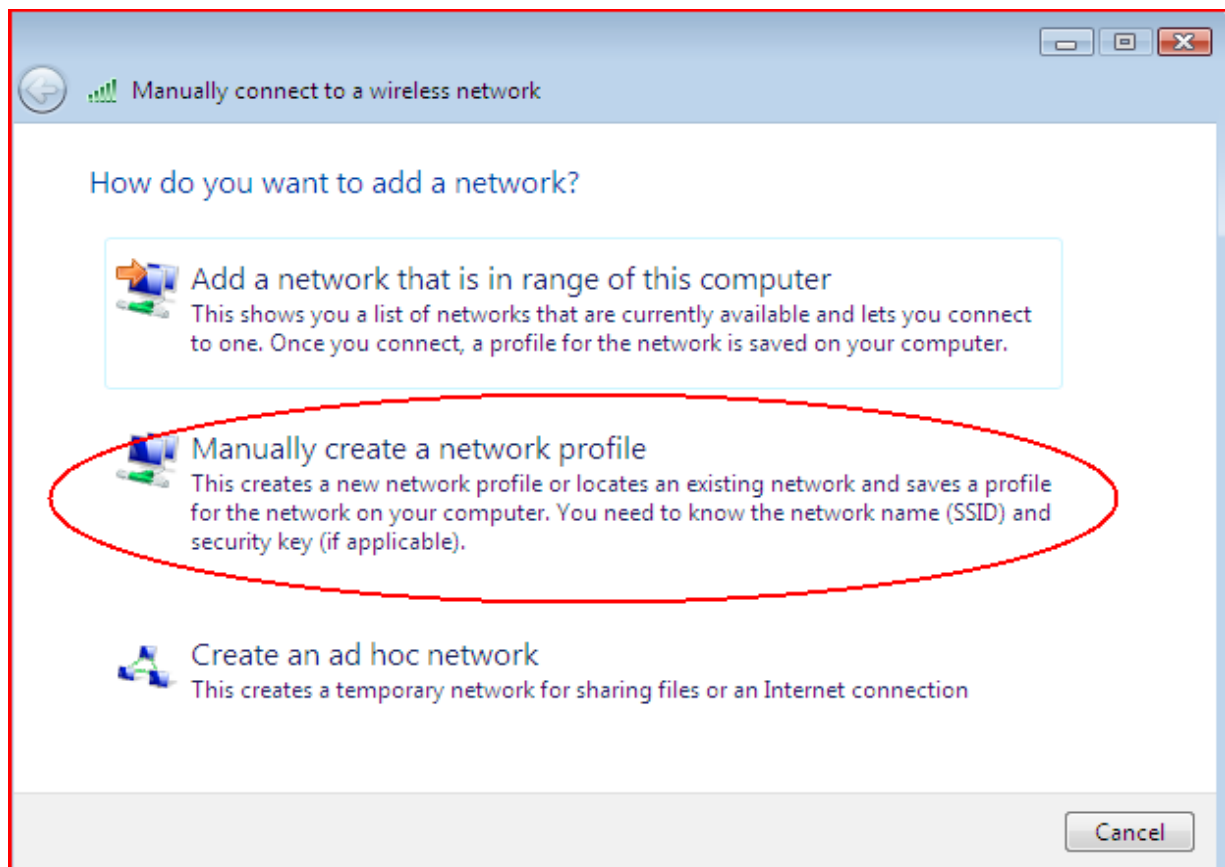


Configure eduroam – Windows Vista

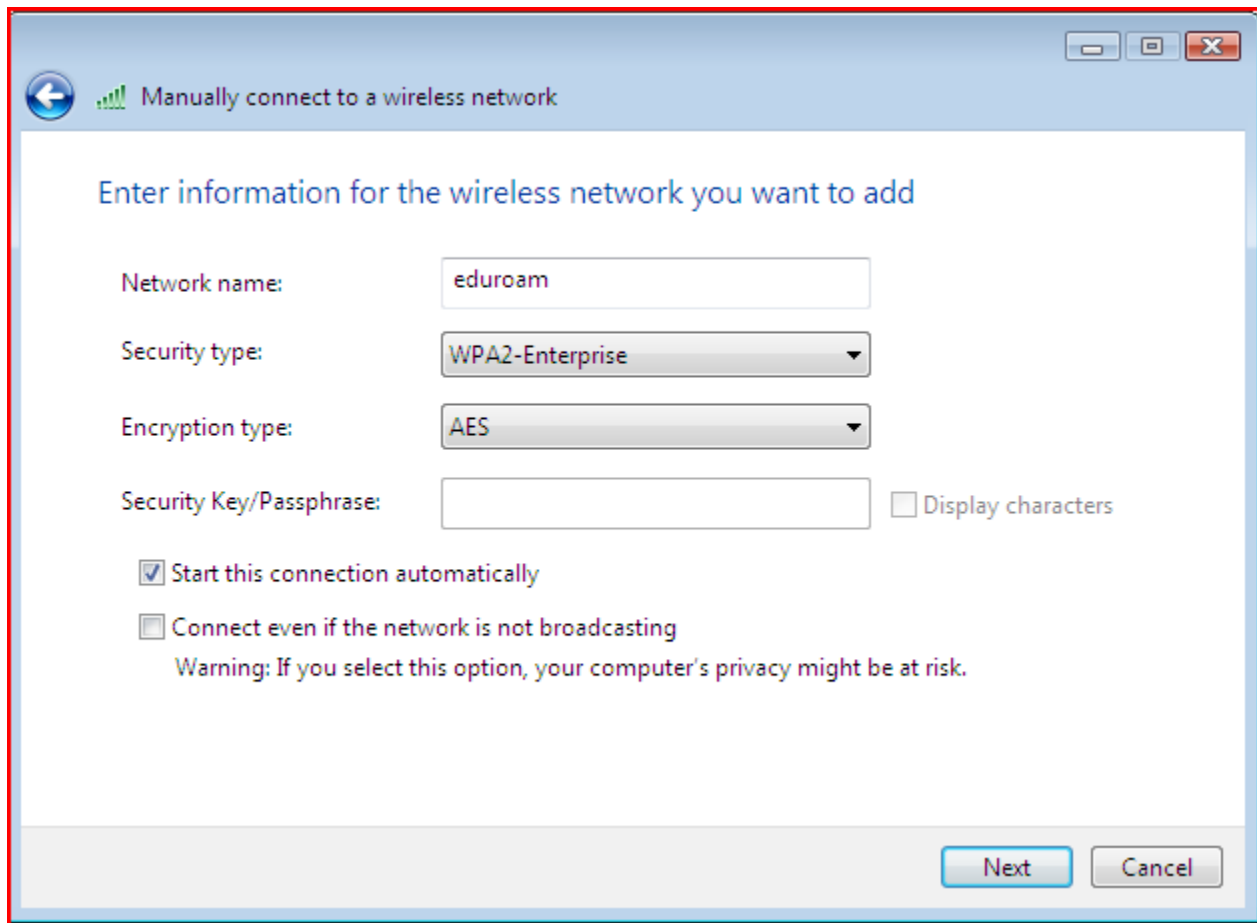
1. Go to **Start**, then **Control Panel**, then **Network and Internet**, then **Network and Sharing Centre**
2. From the list on the left choose **Manage Wireless Networks**
3. Select **Add**



4. Select **Manually create a network profile**



5. In the information box



In the **Network name** box, type *eduroam* (note the lower-case 'e')

- From the drop-down lists

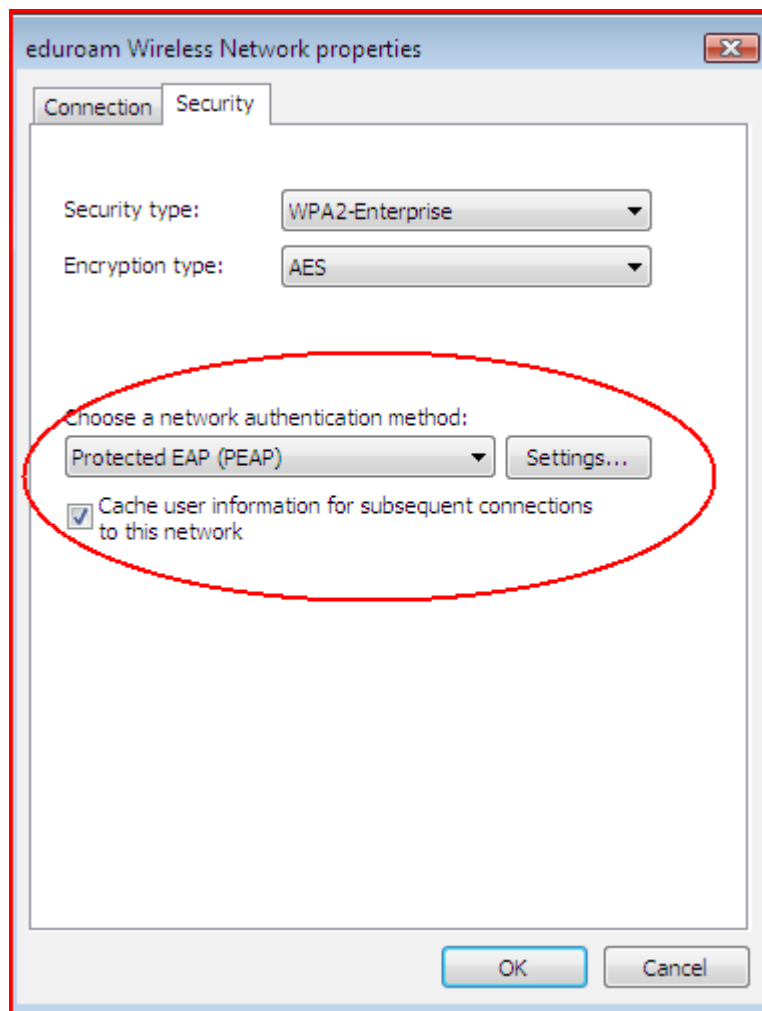
- from **Security type** choose *WPA2-Enterprise* (or *WPA-Enterprise* if your wireless card doesn't support WPA2)

- from **Encryption type** choose *AES* (or *TKIP* if your wireless card doesn't support AES)

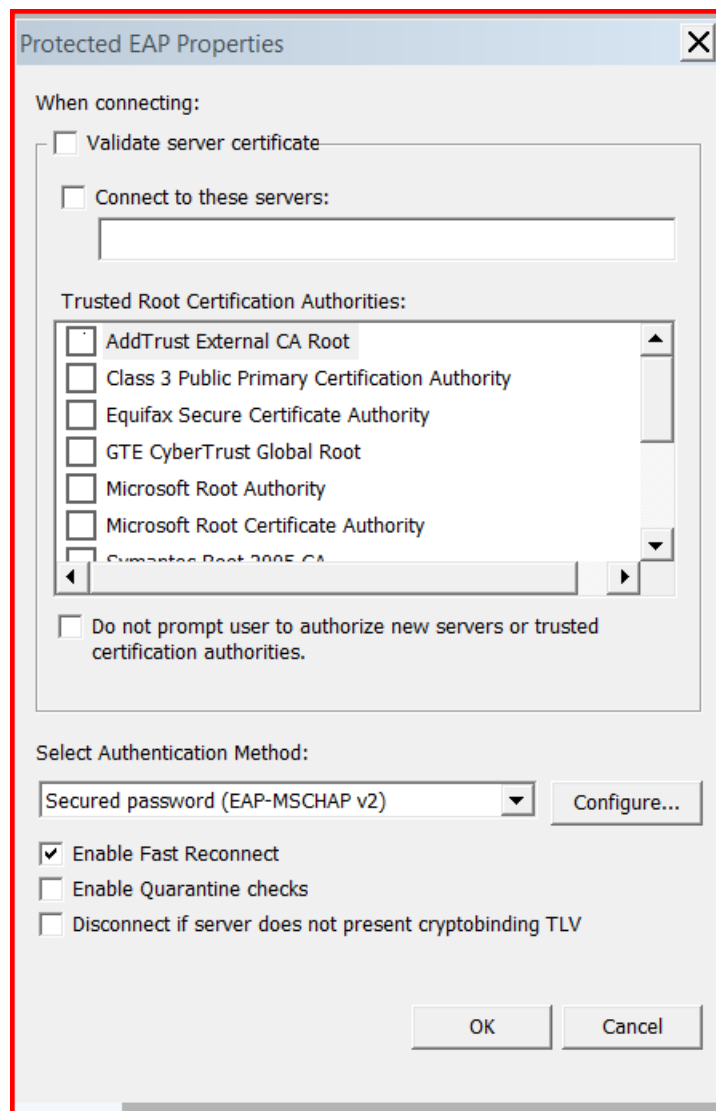
- If the computer has been set up for multiple users then make sure that the additional setting - **Save this network for me only** - is selected.

Select **Next**

6. Select **Change connections settings** then, on the **Connection** tab uncheck **Connect to a more preferred network if available**
7. Select the **Security** tab

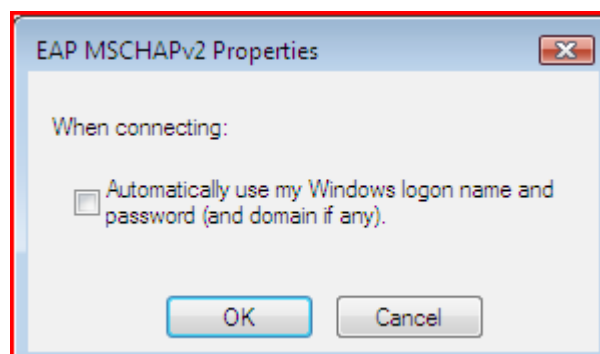


- from the drop-down list for **Choose a network authentication method** choose **Protected EAP (PEAP)**
 - Select **Settings...**
8. Complete the settings in this dialogue box as shown:



ensure the **Validate server certificate box** is **unchecked**.

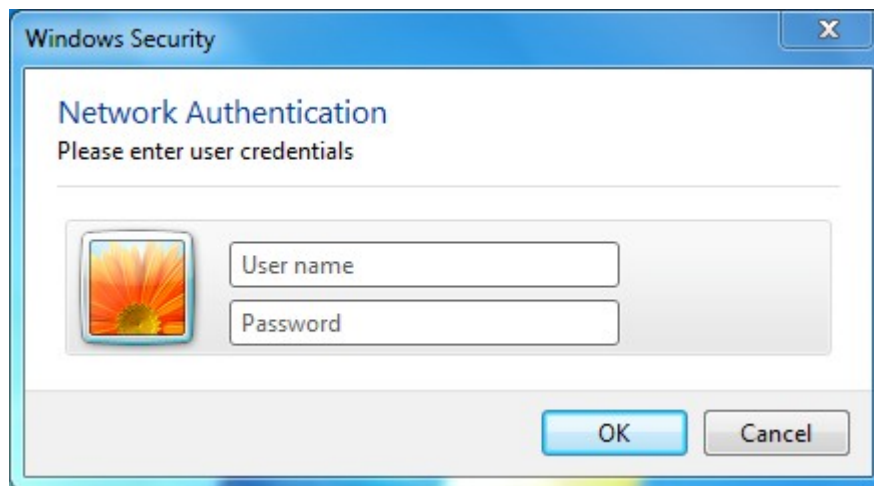
9. The drop-down list under **Select Authentication Method** should already have **Secured password (EAP-MSCHAP v2)** selected - select the **Configure...** button next to it to open the *EAP MSCHAPv2 Properties* dialogue box:



10. Untick the box next to **Automatically use my Windows logon name and password (and domain if any)** then select OK
11. Select **OK** to close all the different dialogue boxes
12. Select **Close** to close the "Manually connect to a wireless network" box
13. After a short period of time, your computer should detect the eduroam wireless network and display a balloon, asking if you want to enter your details to connect to it:



14. Click in the balloon and a dialogue box will appear, prompting you for your credentials



15. Complete the dialogue box using the Username and Password provided by the ICT Helpdesk