

Windows XP – eduroam Configuration

Connecting Windows XP to eduroam with an external supplicant

Please note that full administrator rights to your computer are required.

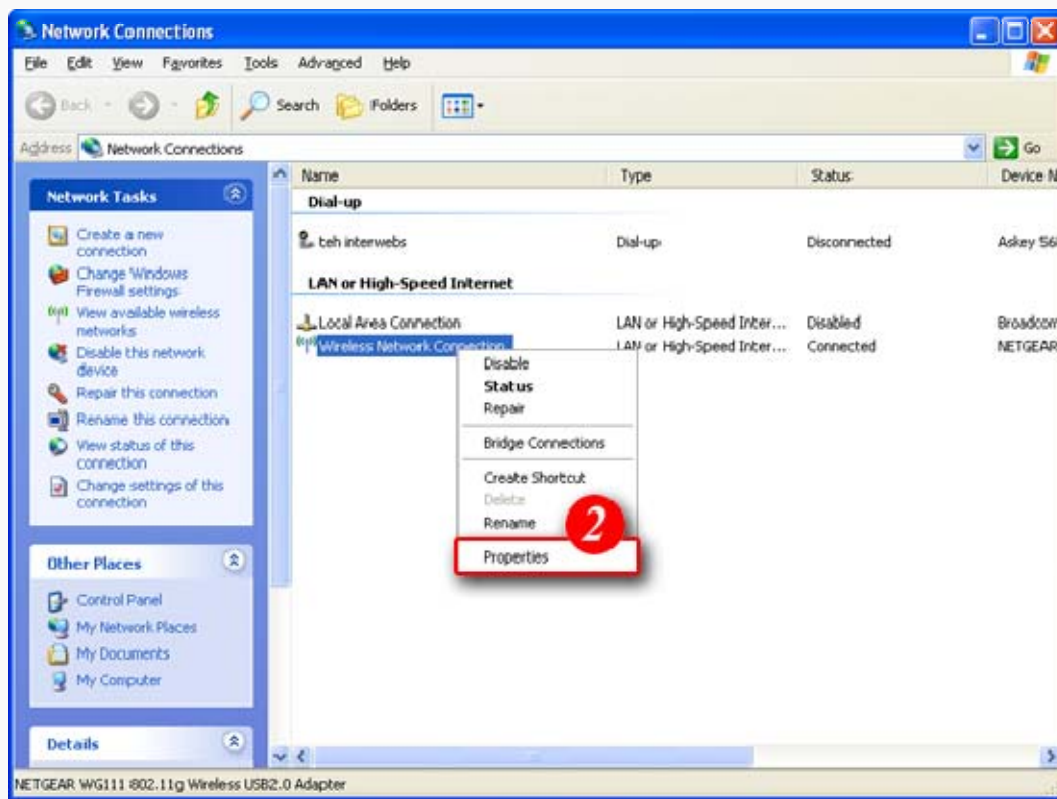
Preparation

1. Before using eduroam you need to install **SecureW2 client**
2. Click on the link below to download the SecureW2 software. Run the installer and follow the prompts.

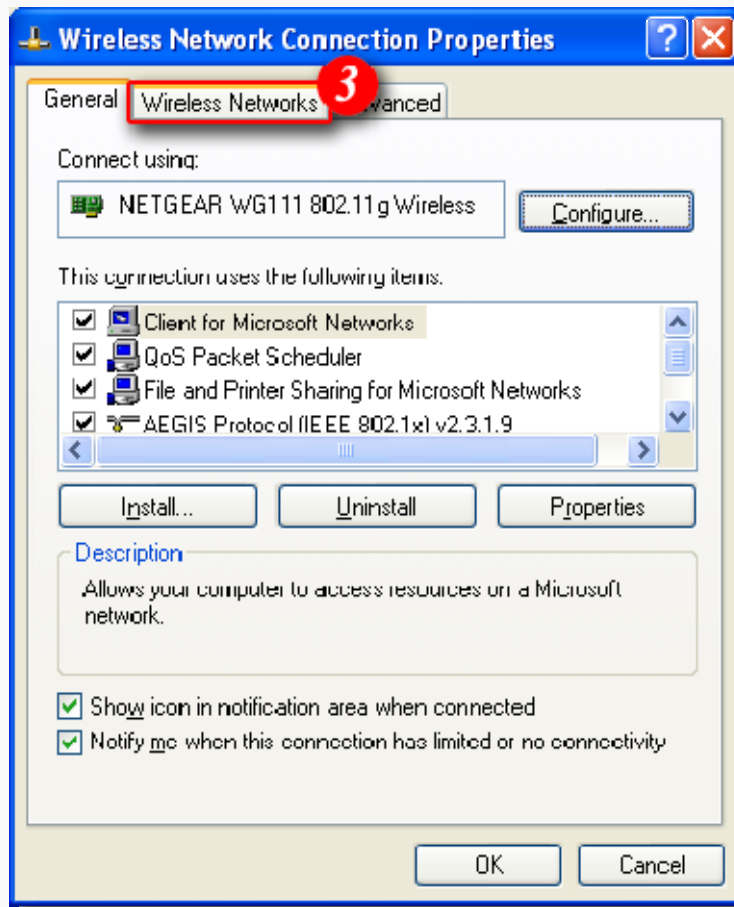
[[Client for Microsoft Windows XP](#)]

Setting up the connection

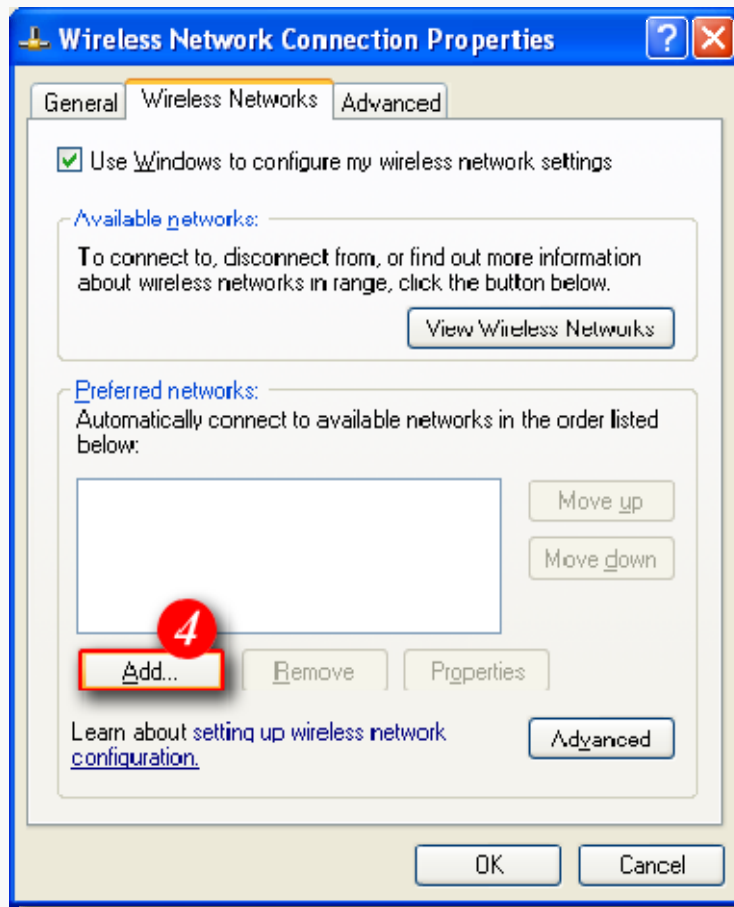
1. Open up your network connections by clicking **Start > Control panel > Network connections**
2. Right click on [Wireless Network connection] and click **Properties**



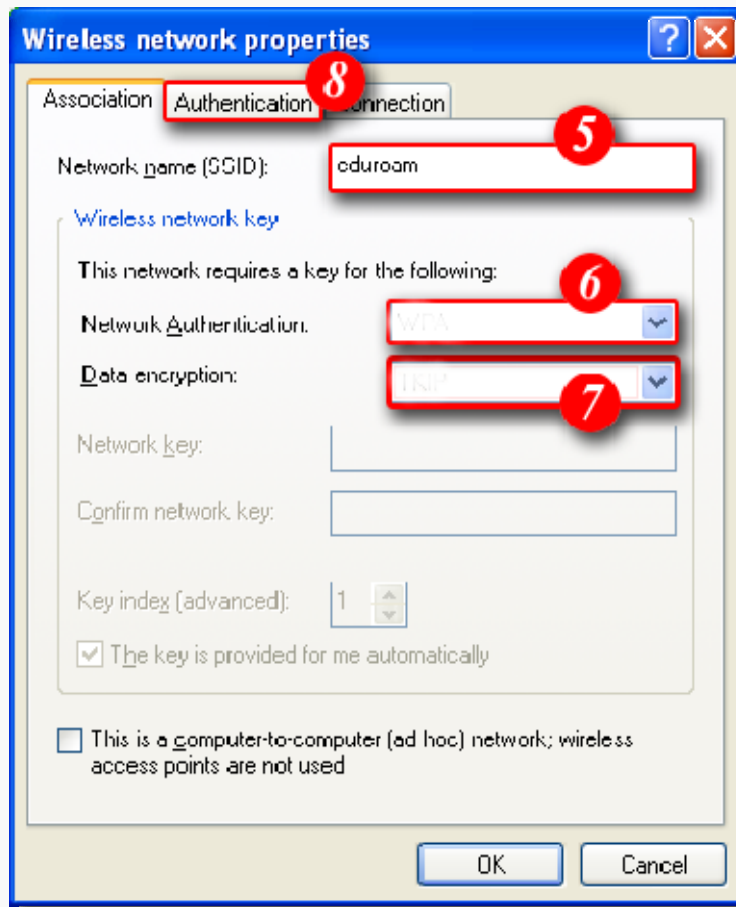
3. Click on **Wireless Networks** tab



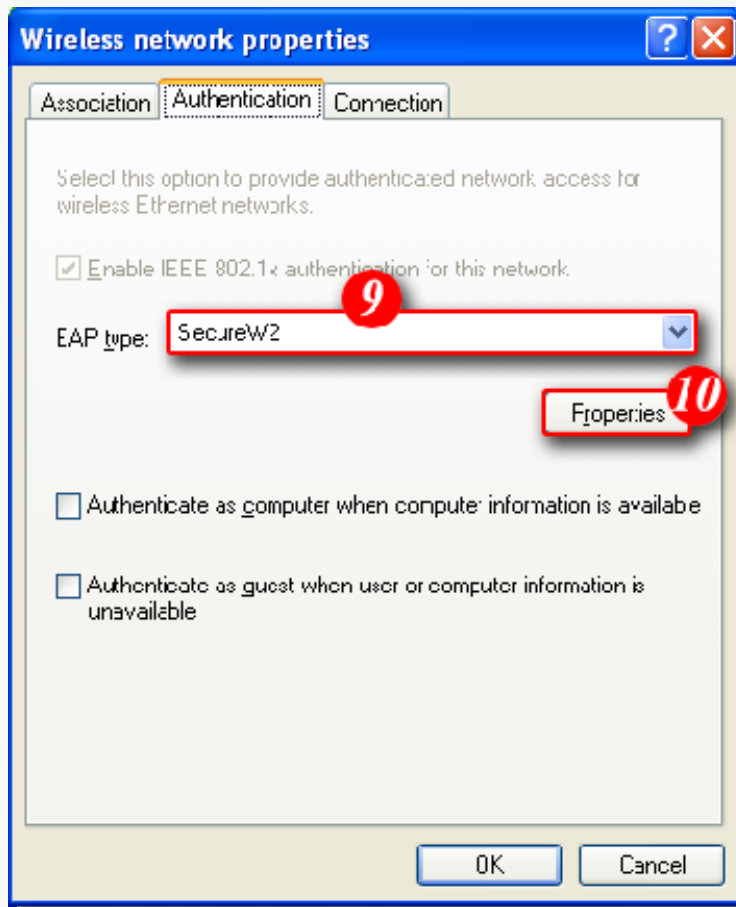
4. Click **[Add]**



5. Add **eduroam** as the SSID
6. Network Authentication: **WPA2**
7. Data encryption: **AES**
8. Click the **Authentication** tab



9. Set EAP type to **SecureW2**



10. Click **Properties**

11. Click **New**



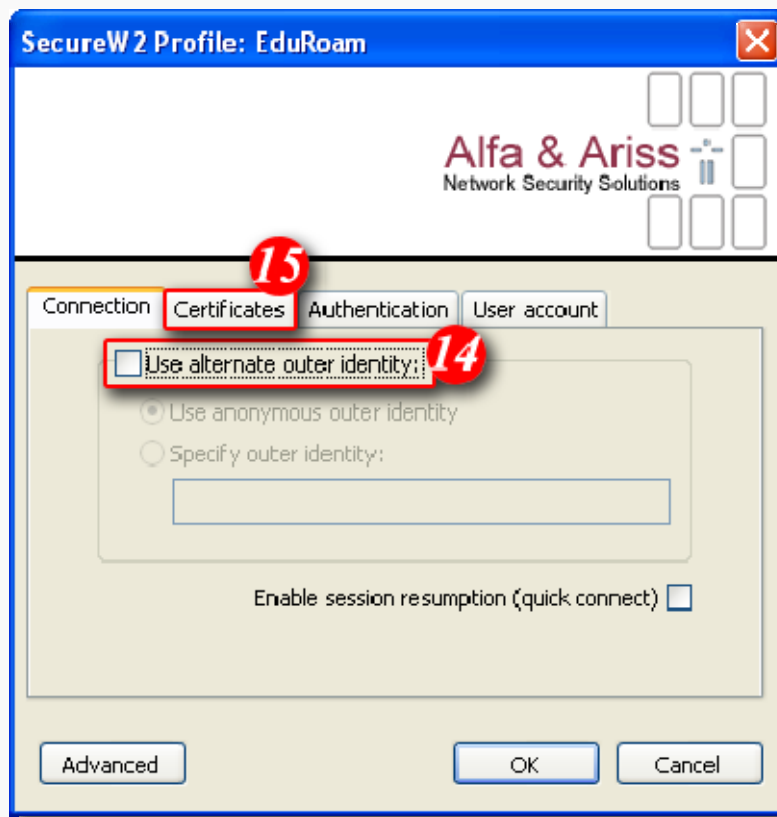
12. Enter **eduroam** as the Profile ID

13. Click **OK**



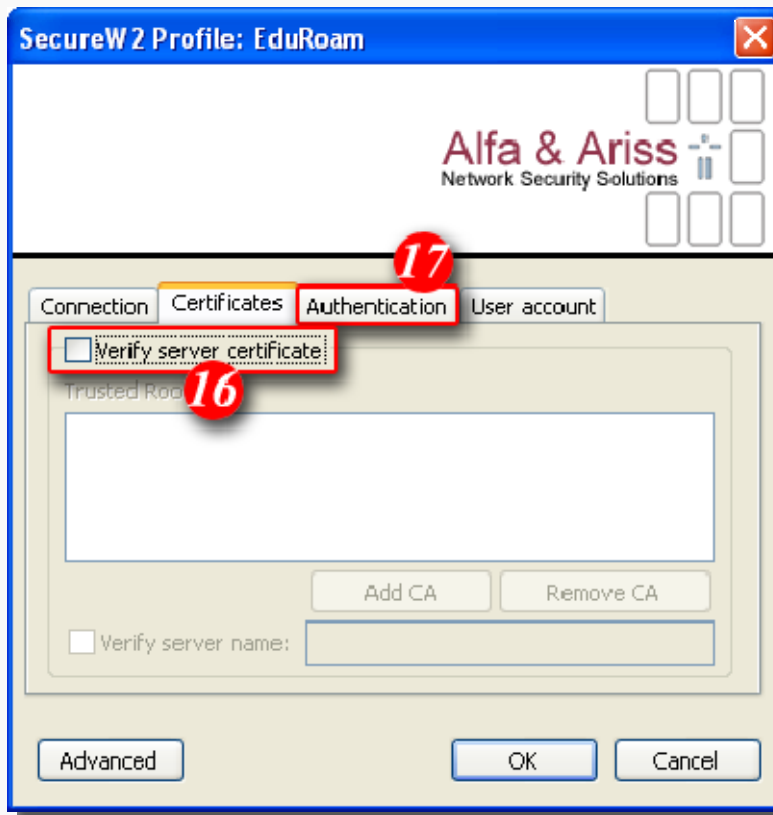
14. Ensure **Use alternate outer identity** is not ticked

15. Click **Certificates** tab



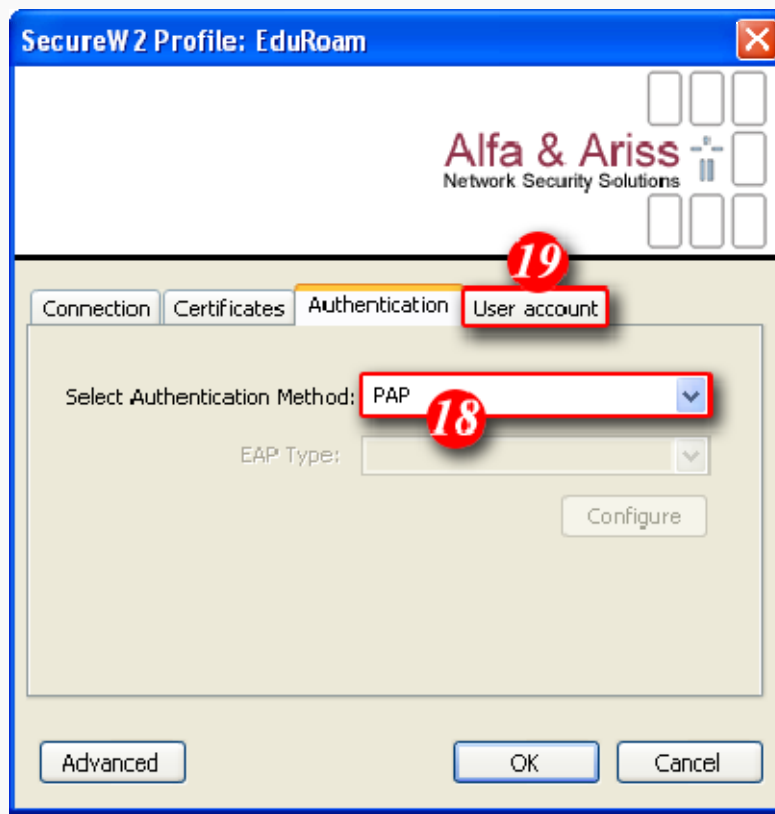
16. Ensure **Verify server certificates** is **not** ticked

17. Click the **Authentication** tab

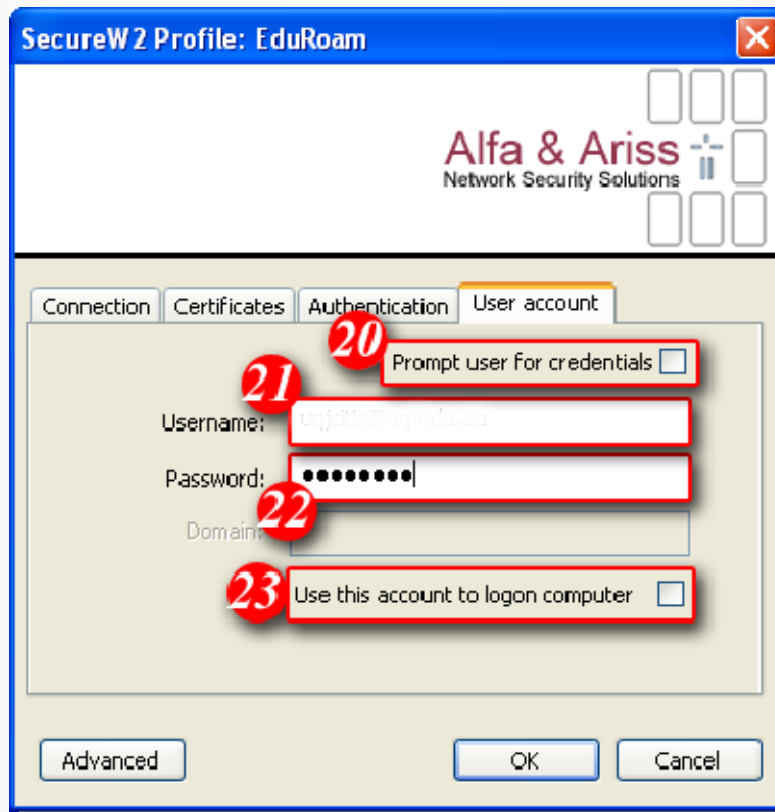


18. Select Authentication Method: **PAP**

19. Click the **User account** tab



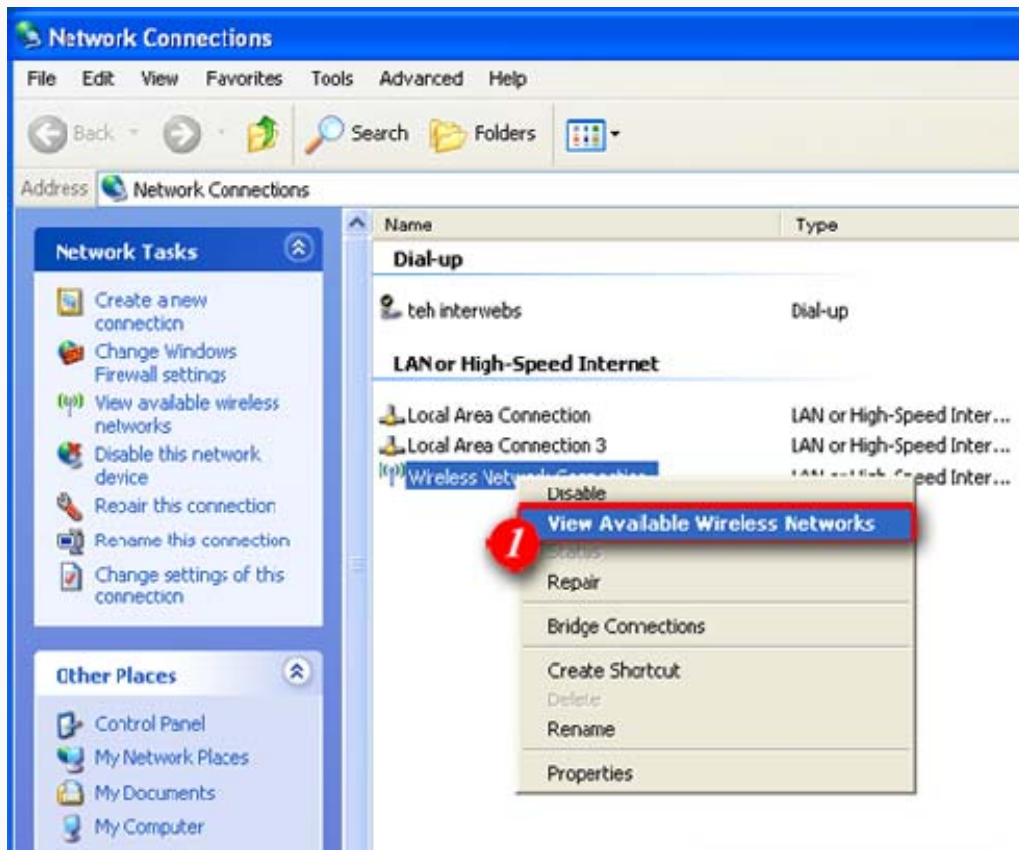
20. Ensure **Prompt user for credentials** is not ticked
21. Enter your **username@ku.ac.ke**
22. Enter your **password**
23. Ensure **Use this account to logon computer** is not ticked
24. Click **OK**



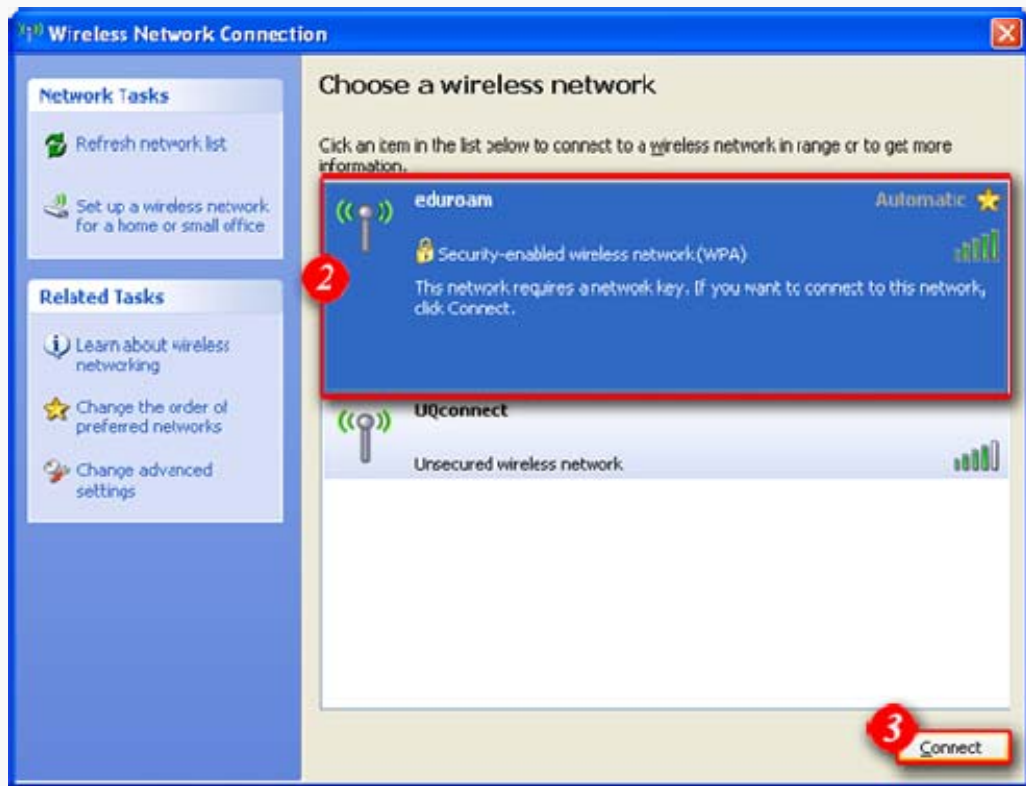
25. Continue clicking **OK** until you are back at **Network Connections**

Connecting to eduroam

1. Right click on **Wireless Network Connection** and click on **View Available Wireless Networks**



2. Select the **eduroam** network



3. Click **Connect**