

Mac OS X 10.7 – Lion - eduroam configuration

Configuration steps

Make sure that you have your credentials (eduroam identifier and Network access token (username and password)) from your Network Administrator.

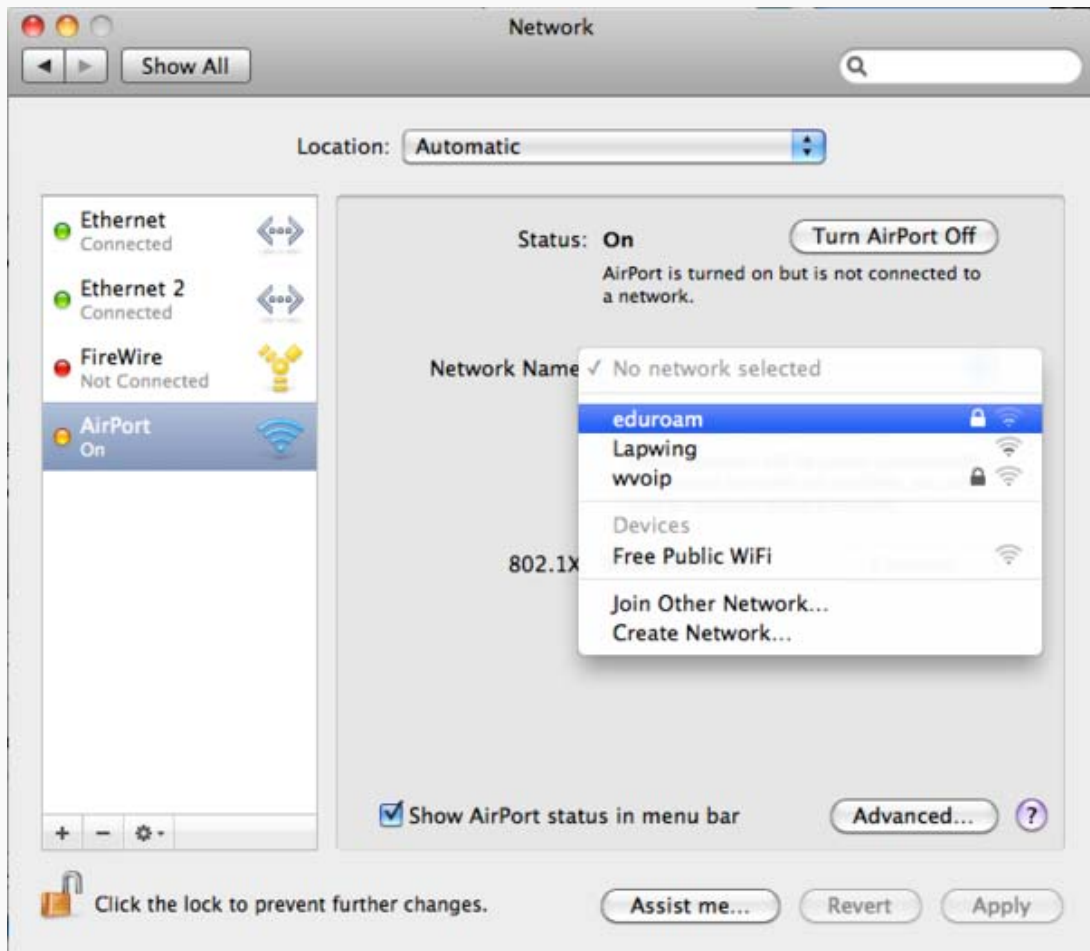
To get the list of networks

Either select **eduroam** from the **AirPort** dropdown in the menu bar (*you may need to select Turn AirPort On first*) Or:-

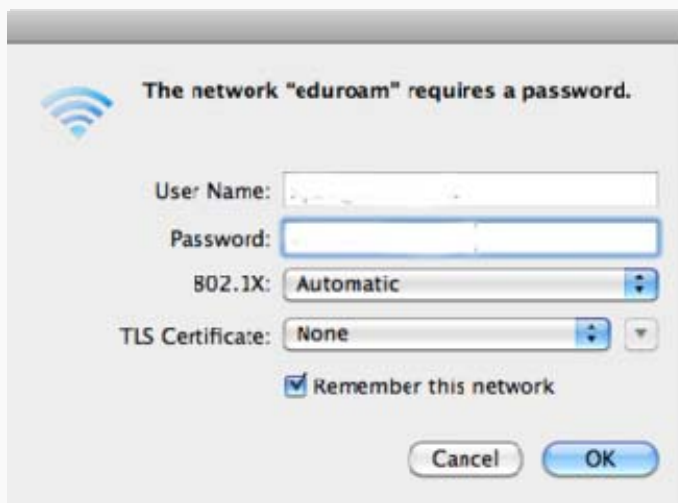
- i. Open **System Preferences**
- ii. From **Internet & Wireless**, select **Network**



Check that the **AirPort** connection is selected, then from the **Network Name** drop down box select eduroam



In the dialogue box that opens:



Enter your **eduroam identifier** (typically your *username* followed by *@ku.ac.ke*) in the **User Name** box

Enter your **Password** in the **Password box**

Leave **802.1X** as **Automatic**

Tick *Remember this network* if it not already ticked

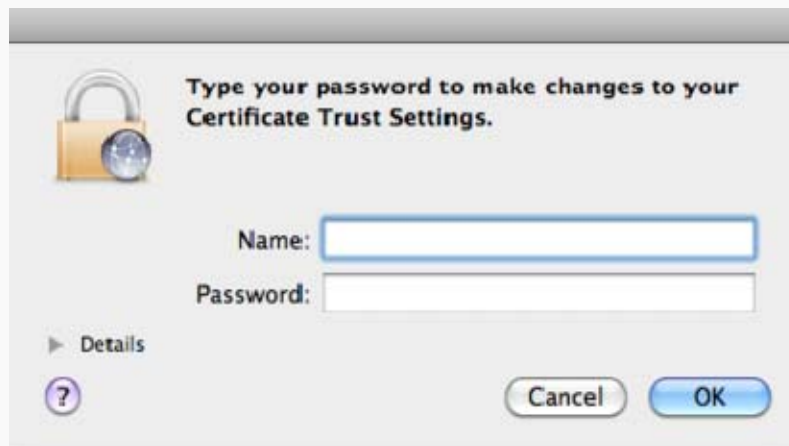
Select **OK**

In the **Verify Certificate** dialogue box

select *Continue*



In the **confirmation box** that appears

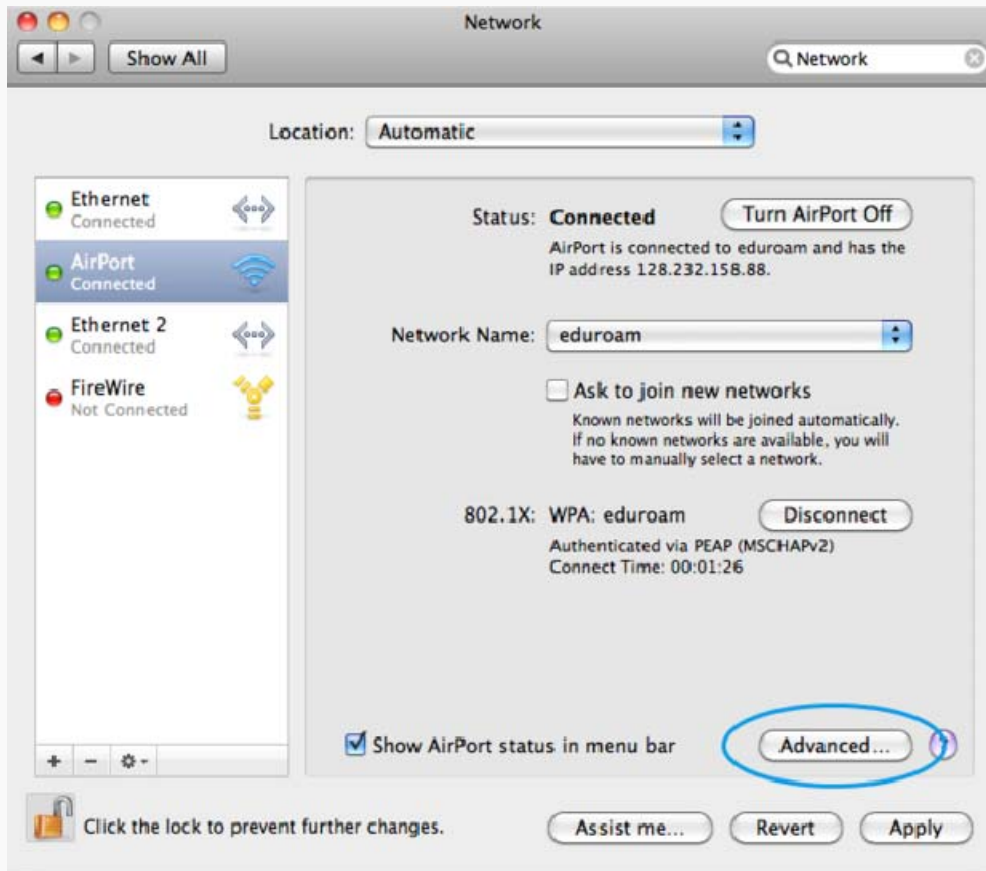


Type your **Mac OS username** and *password* (not the eduroam ones!) then select **OK**

If you started by opening the System Preferences (step i), you will be dropped back into the **Network pane**.

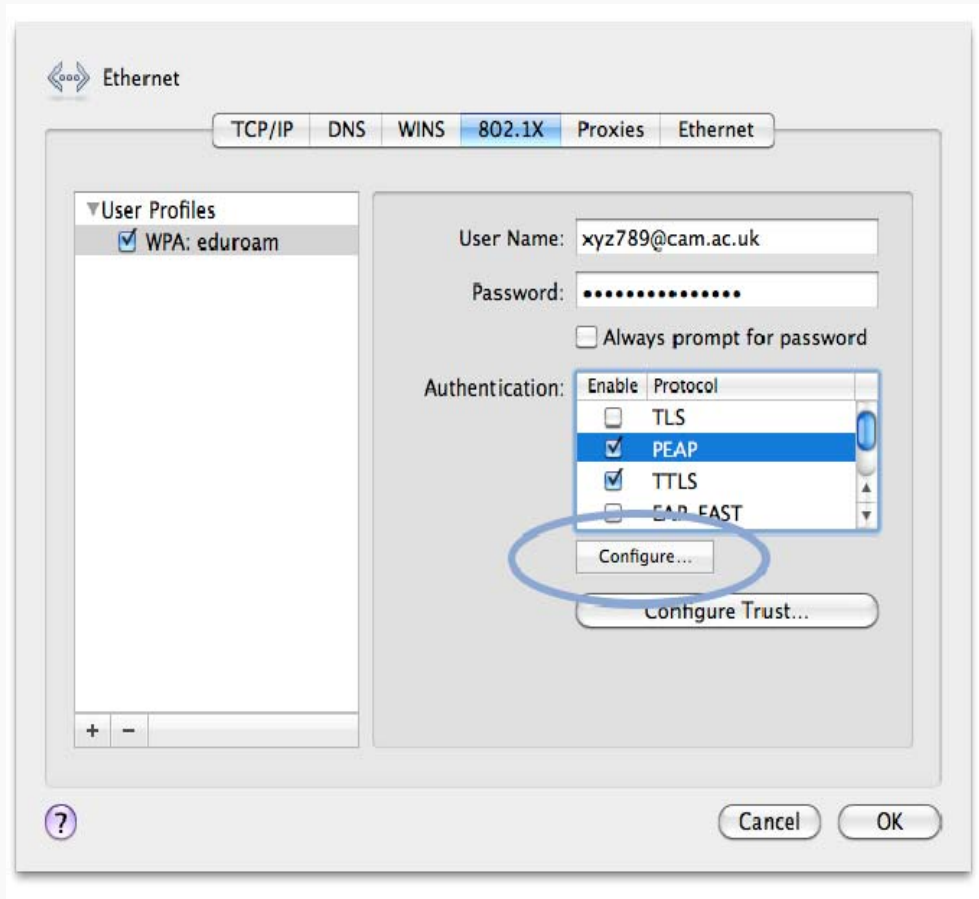
Now you need to set the trust settings for the server

Select **Advanced**



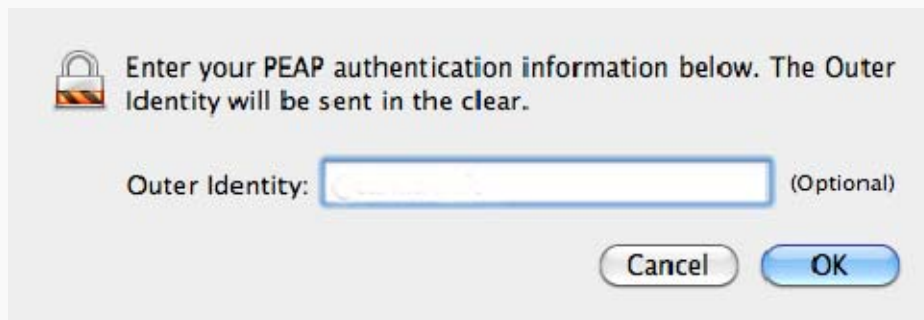
Then choose the **802.1X** pane. Ensure the **User Profile: eduroam** option is **highlighted** (if the profile does not appear then restart your Mac and continue from here).

Make sure that only **PEAP** and **TTLS** are enabled (uncheck anything else) and then select **Configure**



Set the **outer identity** identity to @ku.ac.ke

then select OK to close the pane

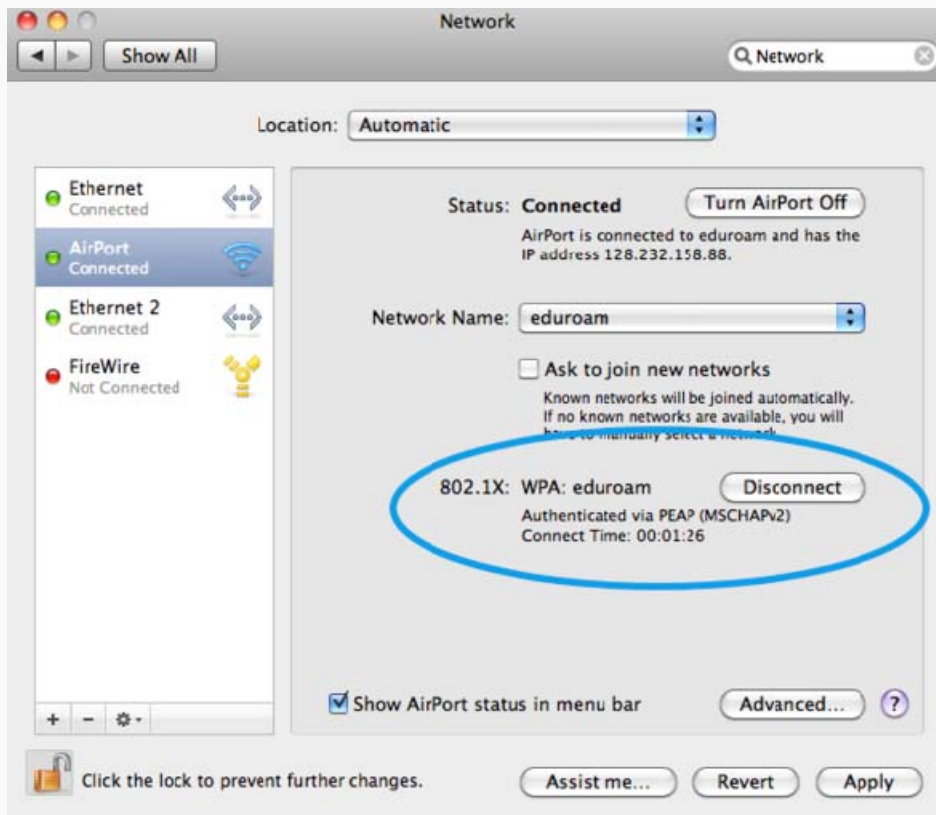


In order to *automatically* connect to eduroam you need to have this set as your preferred network; to do this choose the **AirPort pane** and drag eduroam to the top of the **Preferred Networks list**

then select Apply and then select OK to close the **Advanced pane**



You can now see that you are connected and authenticated



Select **Apply** to save the changes and close the window.

Your computer will now be authenticated to the network, after that you should be able to access the internet. If you get an error saying that authentication has failed, double-check the above steps.

All the settings you have made are stored in your computer and should not need re-entering each time you connect to the eduroam network.